



Chanctonbury Way, London, N12 7AE
Per Month £3,750 Per Month Council Tax Band B

REAL ESTATES
Est.1981

Estate Agents · Residential Sales · Investments · Lettings

AVAILABLE NOW Nestled in the desirable area of Woodside Park, London, this charming house offers a perfect blend of comfort and style. Built in 1950, the property boasts a classic design that has been well-maintained over the years. With four spacious bedrooms, it provides ample space for families recently refurbished throughout.

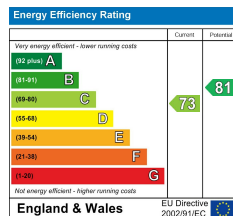
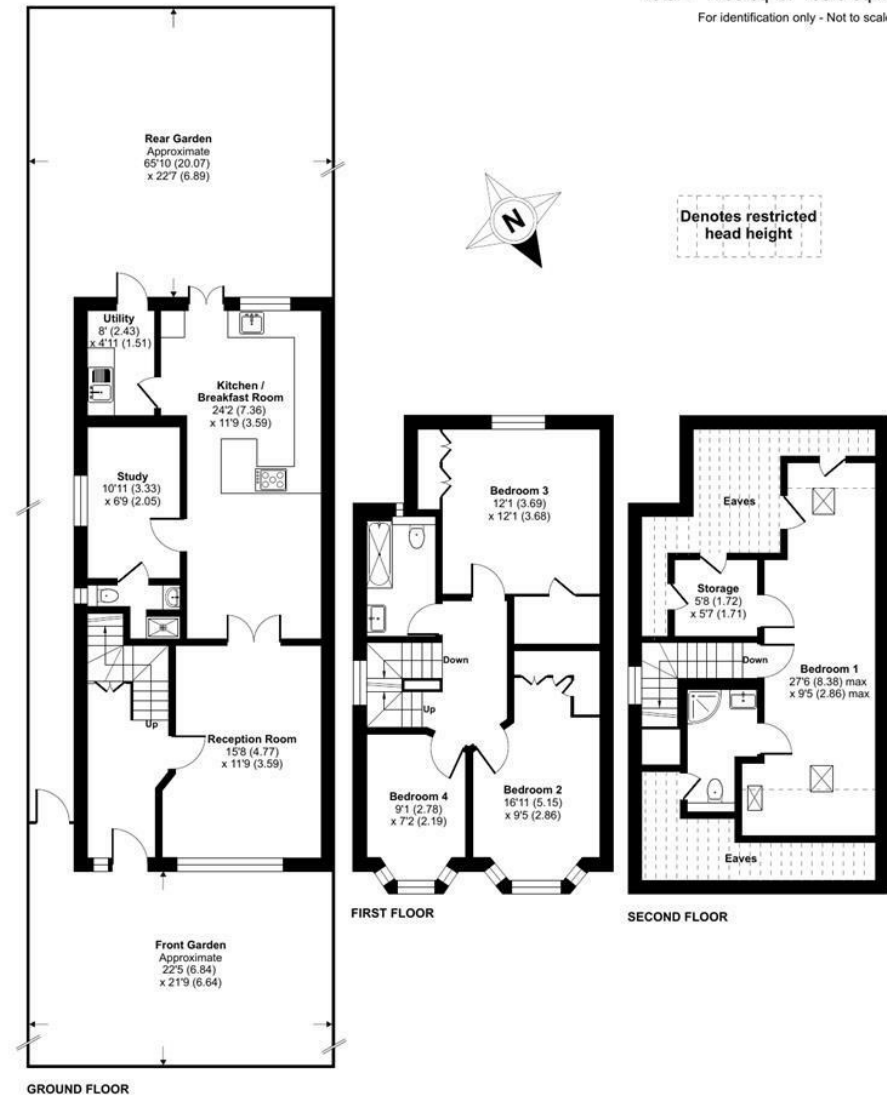
The house features two inviting reception rooms, large garden and utility room and modern Kitchen. Each room is filled with natural light, creating a warm and welcoming atmosphere throughout the home. Additionally, there are three well-appointed bathrooms.

The location offers easy access to local amenities, schools, and transport links, making it an excellent choice for both families and professionals.

Chanctonbury Way, Woodside Park, N12

Approximate Area = 1529 sq ft / 142 sq m
 Limited Use Area(s) = 236 sq ft / 21.9 sq m
 Total = 1765 sq ft / 163.9 sq m

For identification only - Not to scale



Floor plan produced in accordance with RICS Property Measurement 2nd Edition, Incorporating International Property Measurement Standards (IPMS2 Residential). © rñcheom 2026. Produced for Real Estates. REF: 1454871